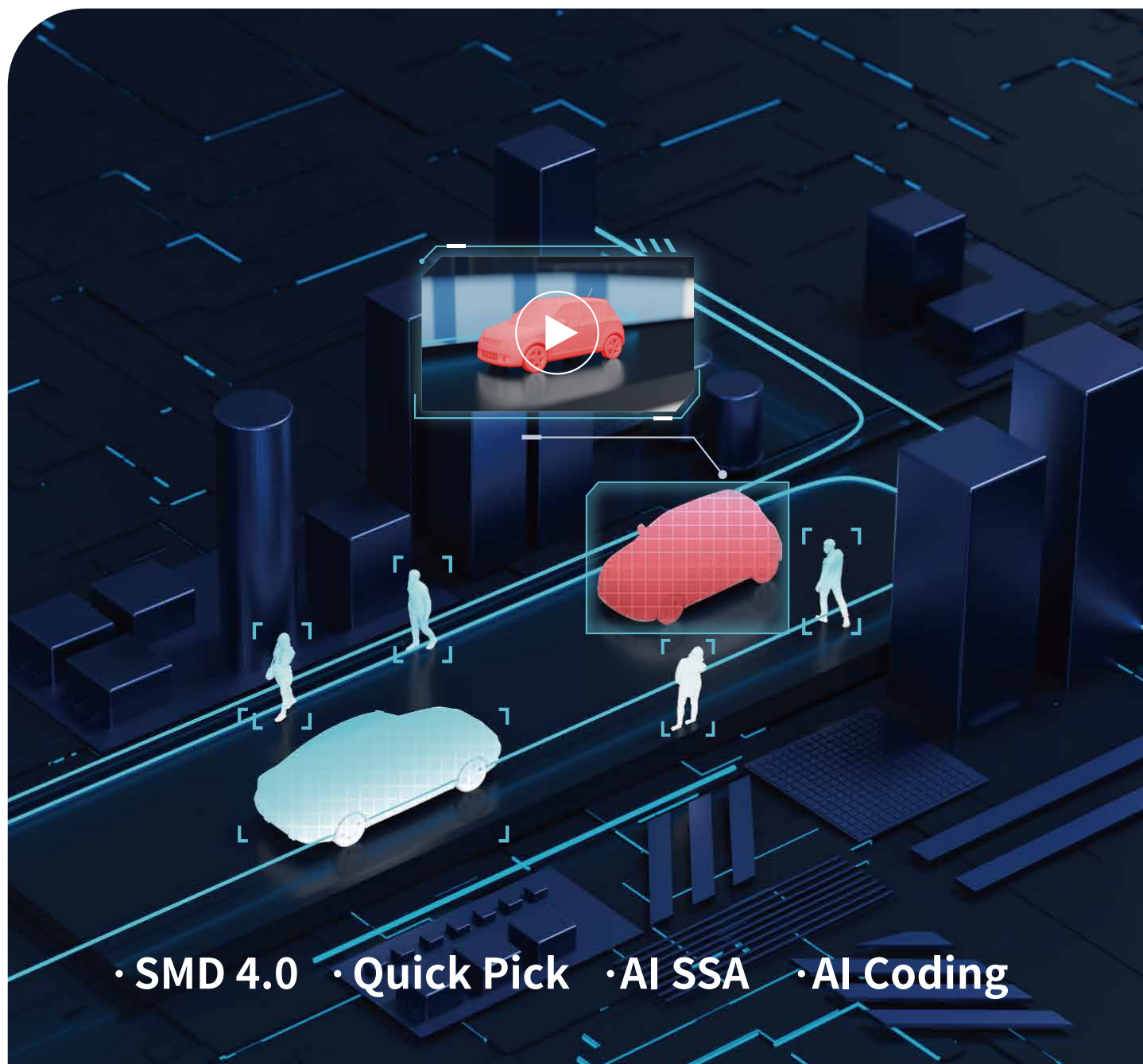


Wiz Sense

Focus on human and vehicle

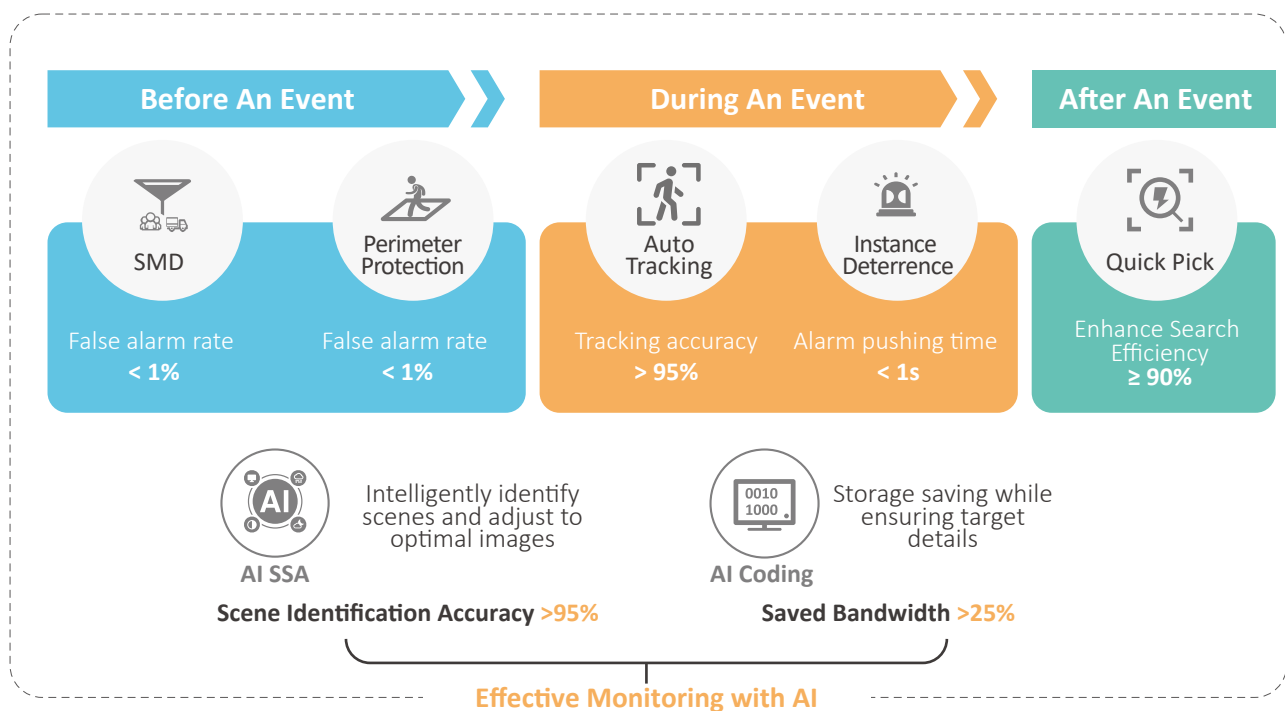


• SMD 4.0 • Quick Pick • AI SSA • AI Coding

- Dahua WizSense is a series of wide range AI products and solutions that adopt independent AI chip and deep learning algorithm.
- WizSense focuses on human and vehicle, benefiting everyone with intelligent functions, simple configuration and inclusive products.



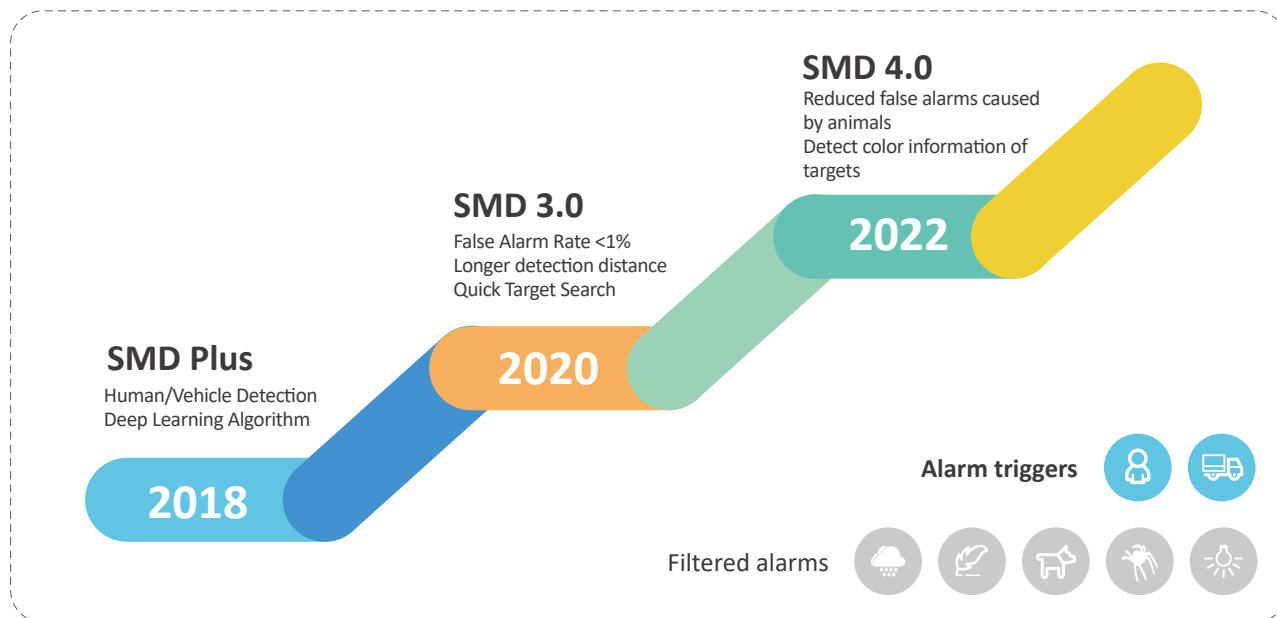
What can Dahua WizSense provide you?



Before an Event: Accurate Prediction

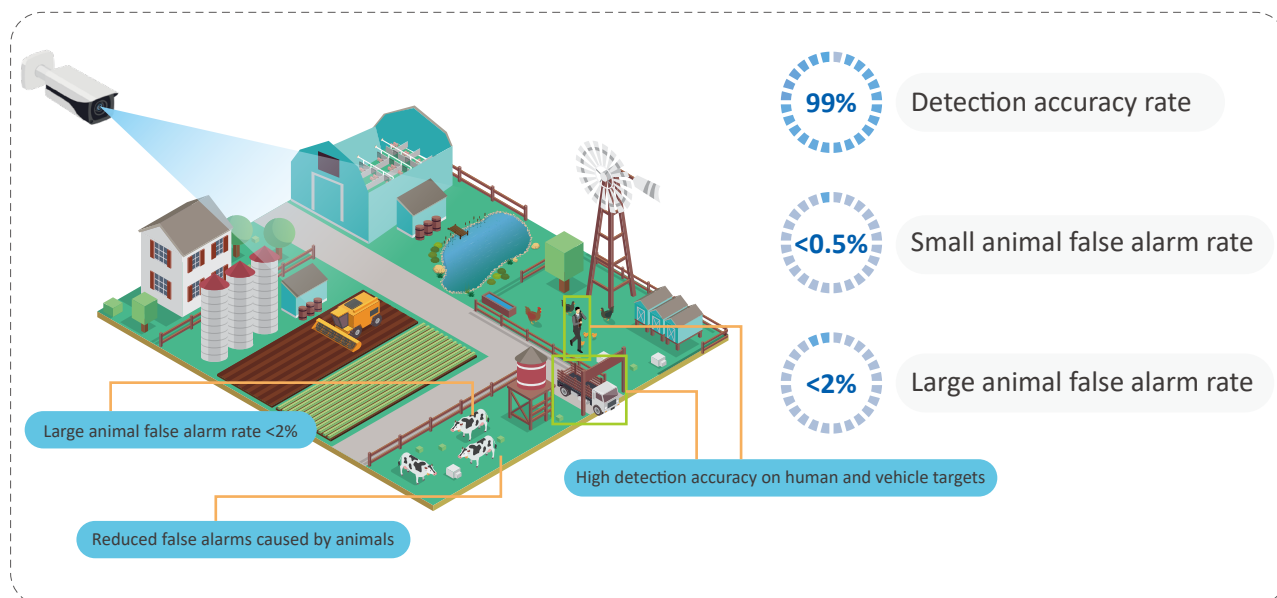


Dahua Technology developed the Smart Motion Detection (SMD) technology to differentiate human and vehicle targets in the scene and send accurate alarms to help ensure the safety of users and their properties.





SMD 4.0: Reduces false alarms caused by animals

With upgraded AI capabilities, the SMD function filters out irrelevant objects in the scene. Equipped with new deep learning algorithm, SMD 4.0 is optimized to filter out small and large animals in the scene to avoid triggering false alarms.

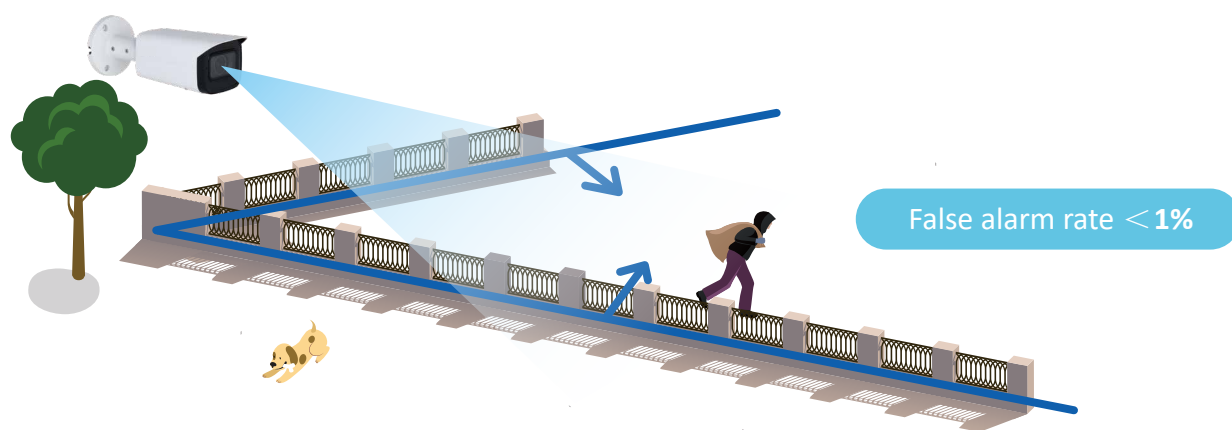


SMD Comparison

	SMD 3.0	SMD 4.0
Detection accuracy rate (Human & Vehicle)	99%	99%
Human detection distance	IPC: Up to 12m (2.8mm fixed-focal camera) PTZ: Up to 400m (day) / 130m (night) (4.8-154mm vari-focal camera)	IPC: Up to 12m (2.8mm fixed-focal camera) PTZ: Up to 400m (day) / 130m (night) (4.8-154mm vari-focal camera)
Vehicle detection distance	IPC: Up to 18m (2.8mm fixed-focal camera) PTZ: Up to 1800m (day) / 130m (night) (4.8-154mm vari-focal camera)	IPC: Up to 18m (2.8mm fixed-focal camera) PTZ: Up to 1,800m (day) / 130m (night) (4.8-154mm vari-focal camera)
Small animals (cat, dog)	< 1%	 < 0.5%
Large animals (cattle, horse, sheep, deer)	< 5%	 < 2%
Quick Pick	/	Supported

Perimeter Protection

The perimeter protection function based on tripwire and area intrusion sends an alarm only when unwanted movements triggered by human or vehicle targets occur, saving users from unnecessary actions caused by false alarms.



Traditional
IVS



Perimeter
Protection

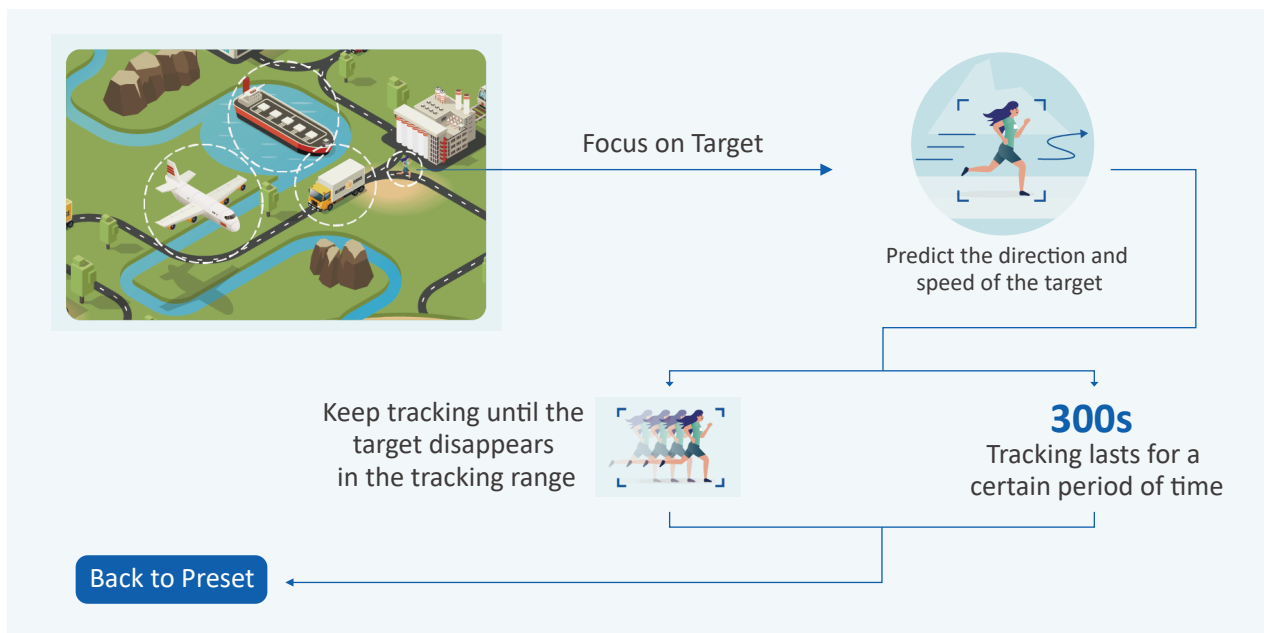


The alarm will only be triggered when a human or vehicle target violates the preset rule.

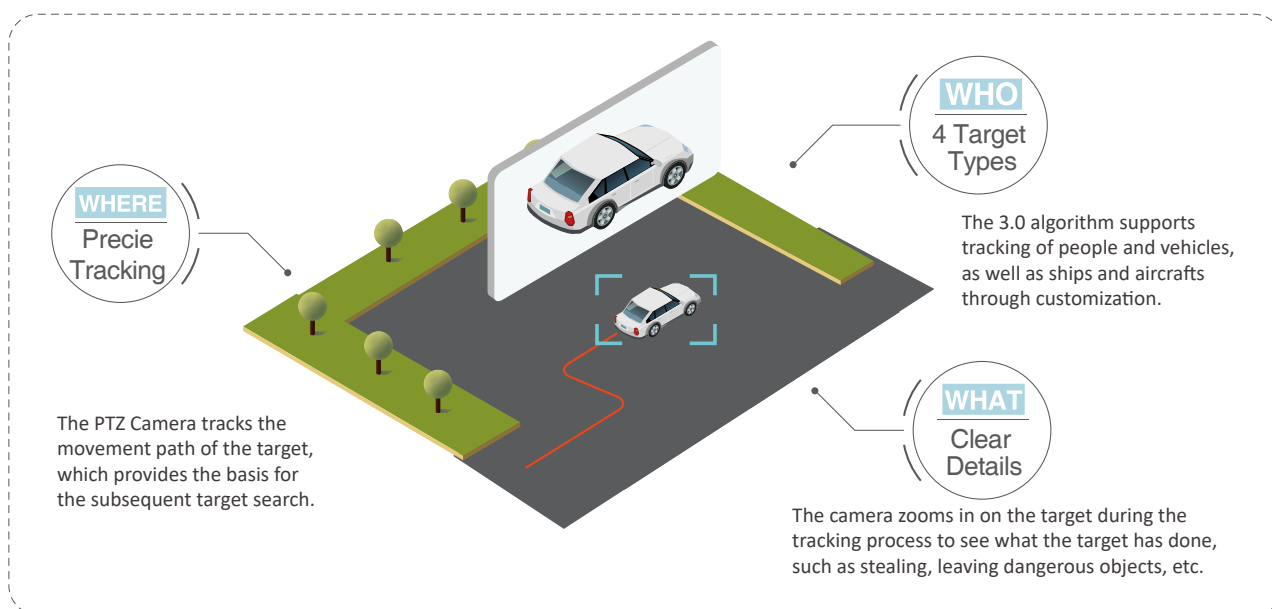
| During and Event: Auto Tracking & Active Deterrence

Auto Tracking 3.0

When a target triggers the IVS rule, the camera uses the rotation (horizontal and vertical) and zoom features to lock the moving target in the center of the screen. Its AI algorithm then predicts the direction and speed of the target to continuously track the target in the scene.



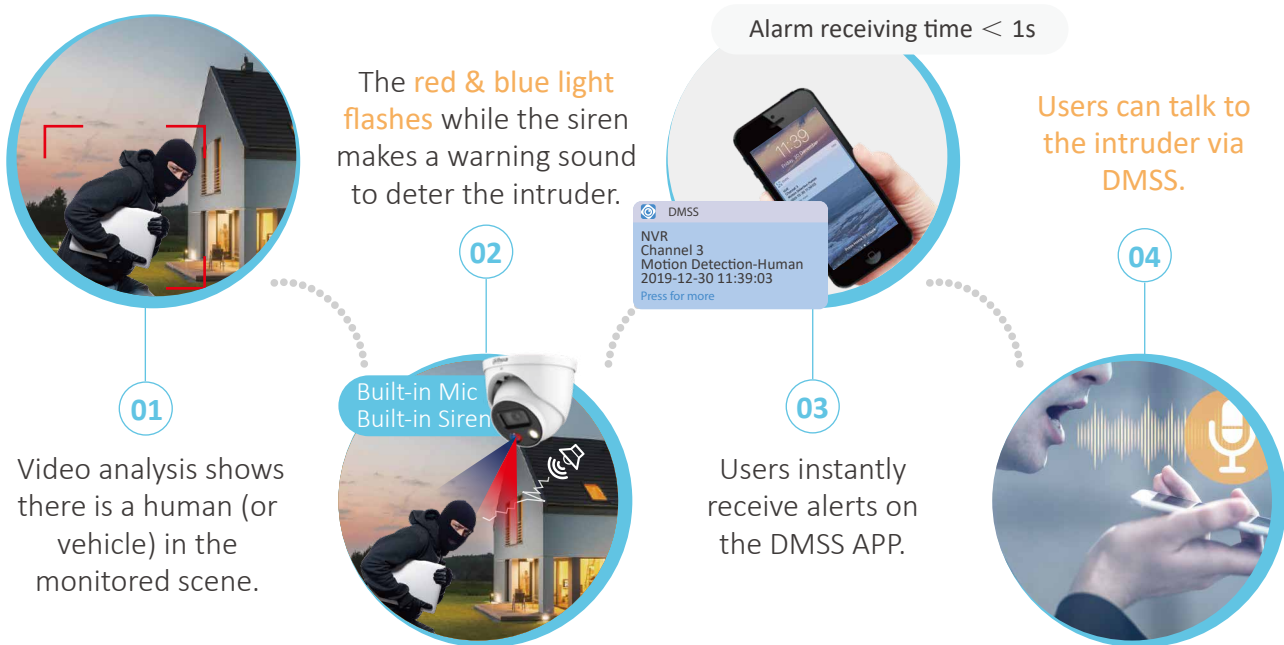
With Auto Tracking 2.0 algorithm as its foundation, the Auto Tracking 3.0 offers both upgraded software and hardware. The tracking performance has significantly improved in all three areas that customers focus on.



Active Deterrence

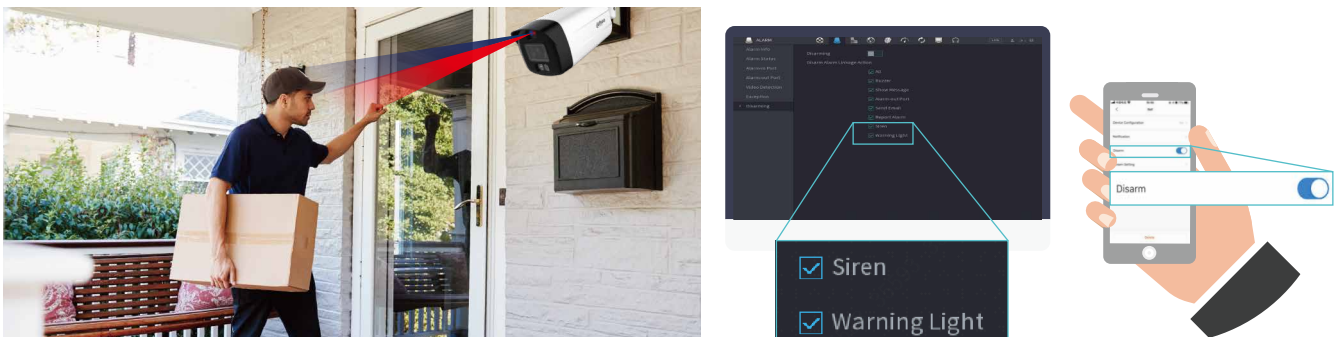
Actively warns off intruders once they have been detected to significantly reduce the probability of any incident from happening.

Alerts users with a real-time push notification that shows trigger type (human or vehicle), and enables users to easily verify alarms through captured videos.



One Click Arming & Disarming

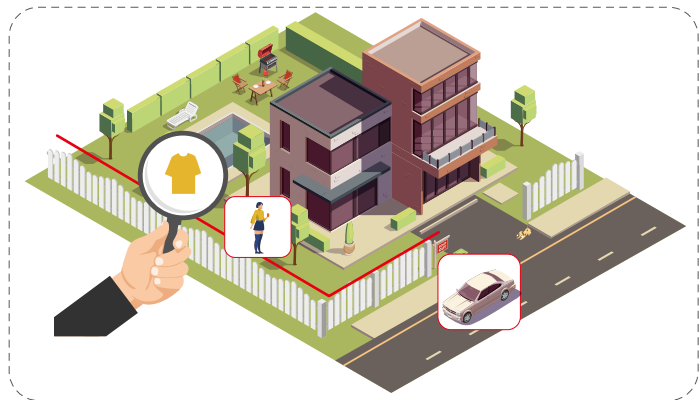
This feature offers a newly-added disarming option for the siren and warning light of the camera. It is also available on the DMSS app, making it easy and convenient for end-users.



| During or After an Event: Quick Pick

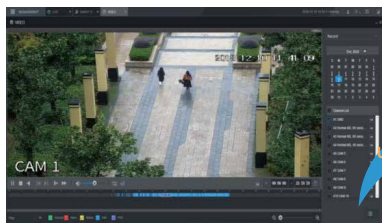
Quick Pick

The Dahua Quick Pick technology can quickly identify human/vehicle targets of interest, which optimizes the search for relevant SMD events. With excellent integration of intelligent functions of both cameras and recorders, this feature can search human/vehicle targets based on AI algorithm that can extract and compare clothing and vehicle colors.

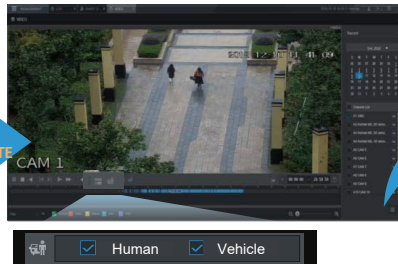


Reduction of Manual Checking

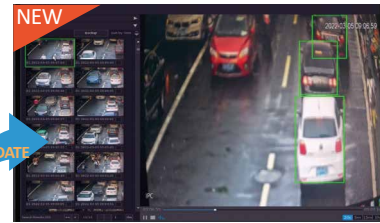
Quick Pick simplifies search steps to save time and costs. It lets you automate what was once a several-hour manual effort.



Manual Check



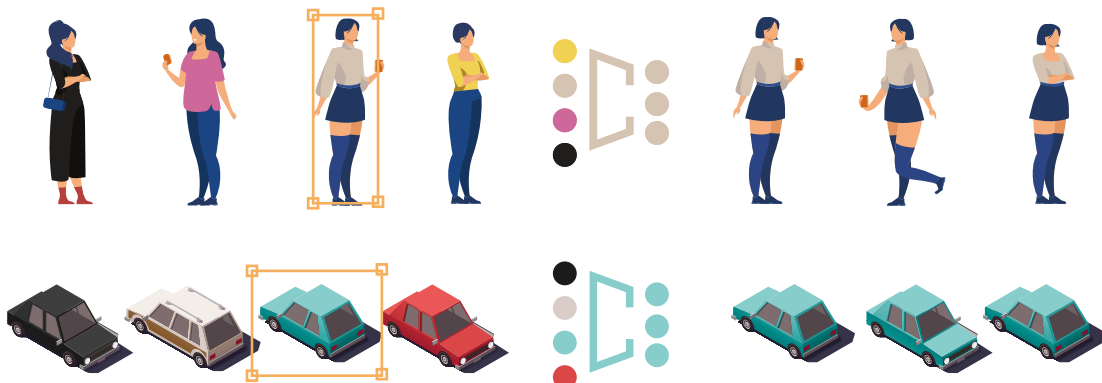
Quick Target Search



Quick Pick

Filter Irrelevant Human/Vehicle Targets

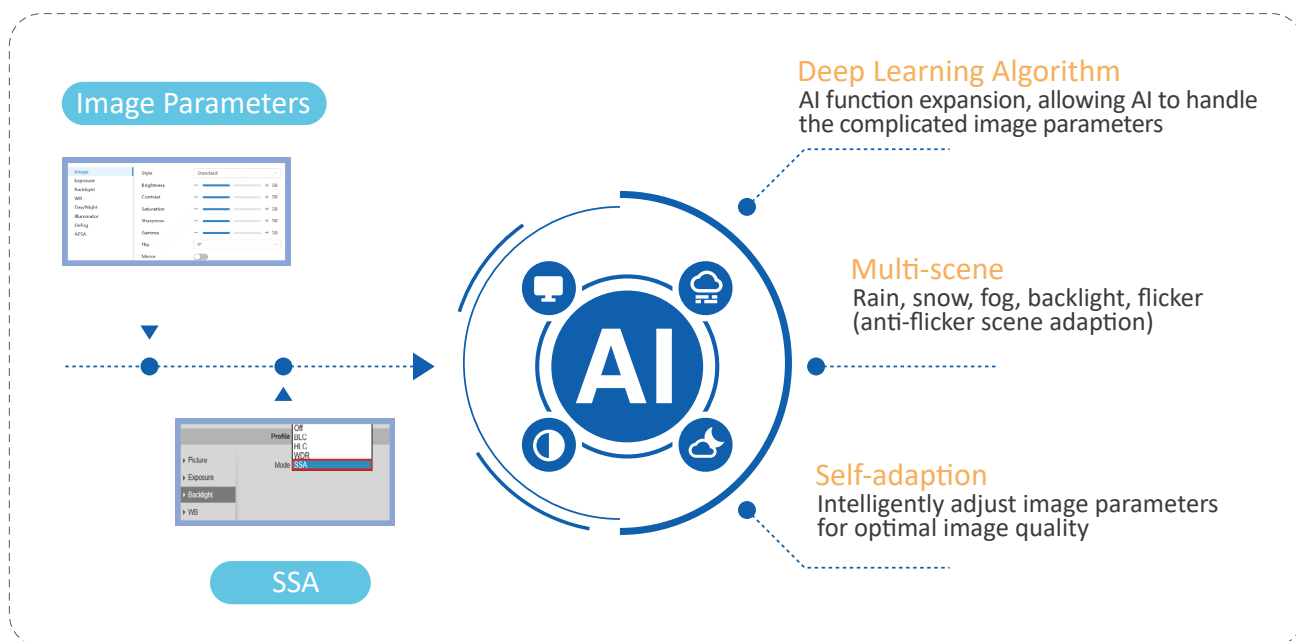
Based on AI algorithm that can extract and compare colors of clothing and vehicles, the Quick Pick function can filter out irrelevant human/vehicle targets. It helps users focus on the targets of interest and find useful information with higher accuracy.



Effective Monitoring with AI

AI SSA

With the continuous development of video surveillance and AI, the demand for images with higher quality is also increasing. The Dahua AI SSA (Scene Self-adaption) technology is based on deep learning algorithm that can intelligently identify multiple scenes and adjust to their optimal images.



Multi-scene

AI SSA can identify multiple scenes such as rain, snow, fog, backlight and flicker, making the camera suitable for more indoor and outdoor application scenarios.

Rain, Snow, and Fog

Automatically switches to defog mode and adjusts image parameters.



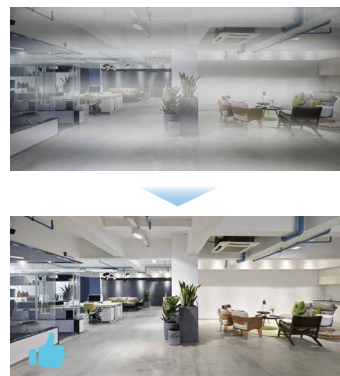
Backlight

Identifies backlight scenes and adjusts WDR settings to ensure clear and vivid image.



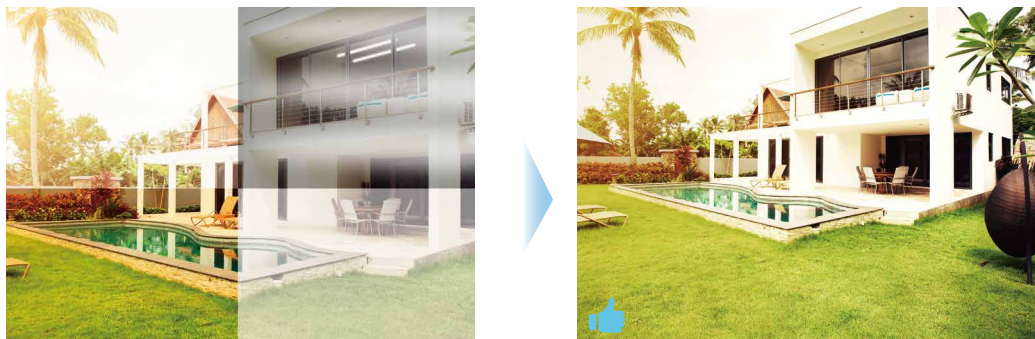
AFSA

The anti-flicker scene adaption solves the horizontal stripes problem caused by flashing LED lights.



Self-adaption

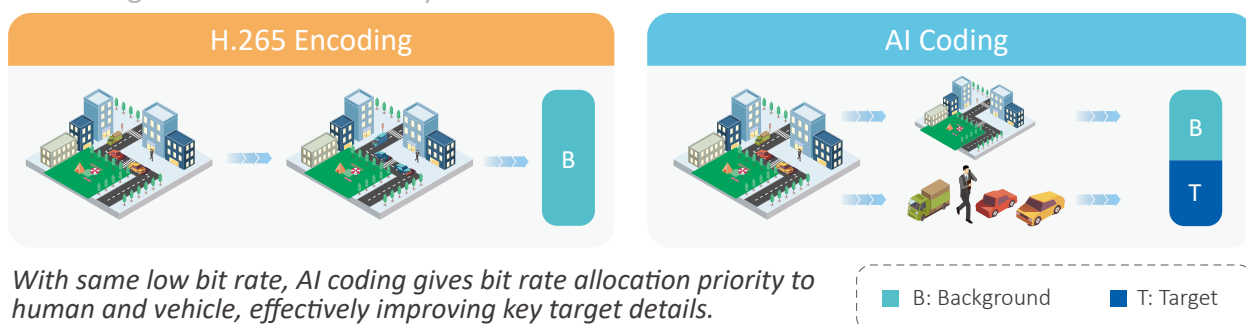
Based on the scene condition, AI SSA will adjust the image parameters such as exposure, lightness, or other specific image features to capture the highest quality images.



AI Coding (IP Solution)

With the improvement of monitoring resolution, how to maintain image quality while saving storage cost has become one of the most concerning problems of users. Based on CBR (Constant Bit Rate), WizSense AI Coding dynamically allocate bit rate, providing clear target images while saving more than 25% bit rate compared with H.265.

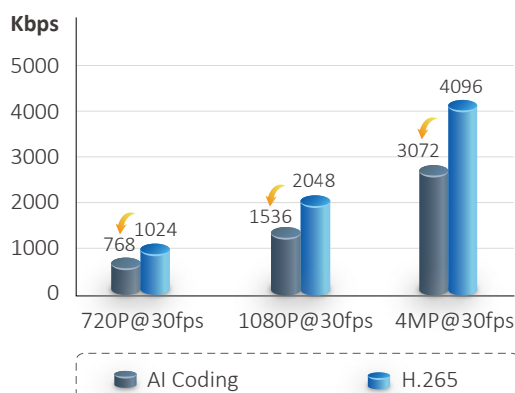
*AI Coding function is enabled by default.



Save Storage Space while Ensuring the Image Quality of Targets

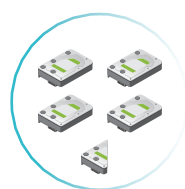
25%

Saves more than 25% of bandwidth and storage space!



Storage for 1 month of video footage

2MP/8-ch



AI Coding: 4.5T



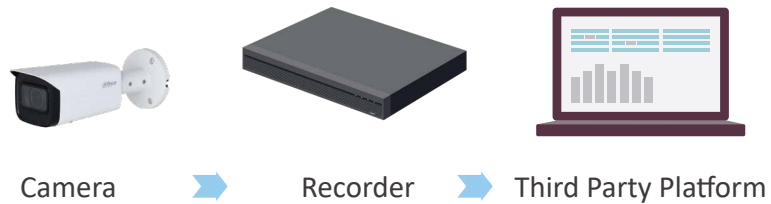
H.265: 6T



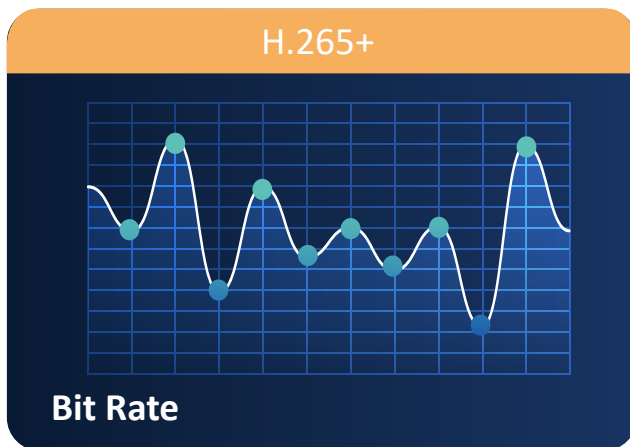
H.264: 12T

High Compatibility

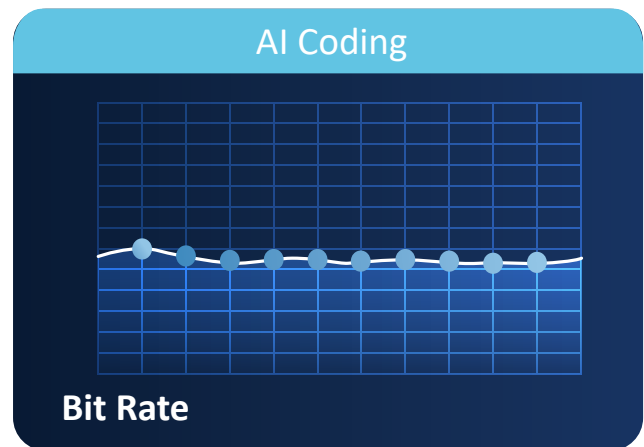
Through CBR (Constant Bit Rate), AI Coding does not lose its decoding compatibility when integrated with third-party players or platforms.



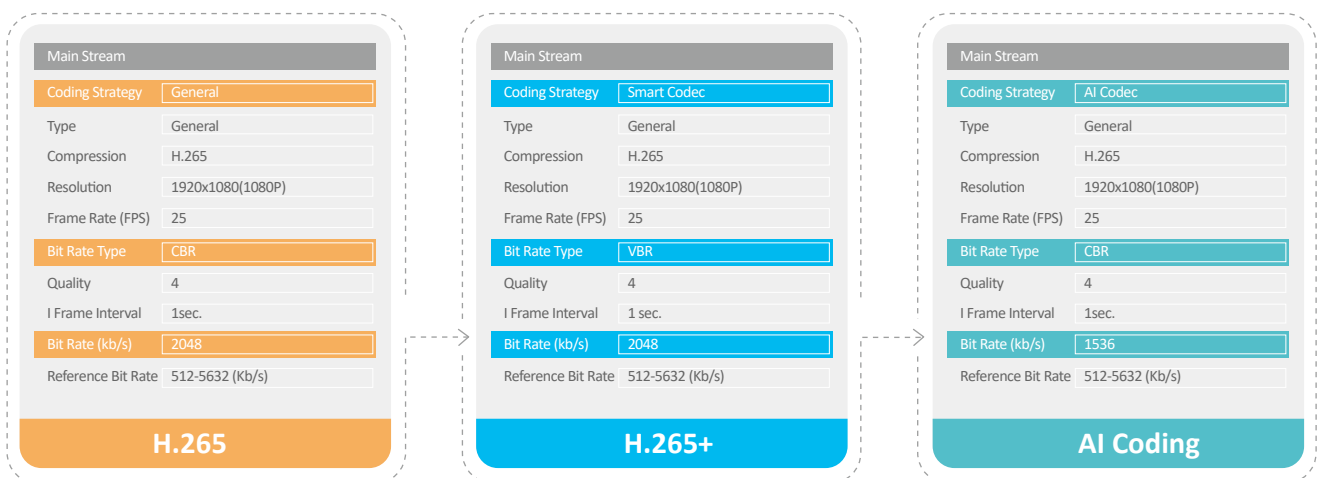
High Stability



VBR (Variable Bit Rate) has high burstiness, which makes it difficult to calculate the required bandwidth.



Makes it easy to deploy bandwidth and improves bandwidth utilization.



Application Scenarios

Villa's Yard

Protect your property when you're away from home



SMD



Perimeter Protection



Push Notification



Visual and Auditory Warning

False alarm reduction

Push notifications via smartphone

Active deterrence using warning lights and siren

Shopping Mall

Detect suspicious targets of interest quickly



SMD



Quick Pick



AI SSA (IPC only)



AI Coding (IP Cameras)

Efficient search for human/vehicle targets

Clear images for more details of the event

24/7 time-sharing monitoring

Factory

Keep people away from restricted areas



SMD



Time-sharing Monitoring



Push Notification



Visual and Auditory Warning

Highly accurate alarms for human/vehicle targets

Flexible perimeter protection rules according to fence structure

Sound and light alarms for active deterrence of intruders

Farm

Safeguard your outdoor properties and reduce labor costs



SMD



Quick Pick



AI SSA (IPC only)



AI Coding (IP Cameras)

Accurate alarms; Filters out irrelevant objects

Efficient search; Saves labor cost

Better image quality; Easy configuration

Solutions & Products

Solution: WizSense IP/PTZ
Cameras + WizSense NVR



Quick Pick



AI SSA (IPC only)



AI Coding
(IP Cameras)



SMD 4.0



Perimeter
Protection



Face
Recognition



Active Deterrence
(PV Cameras)

WizSense IPC



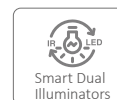
IPC 3X41-S2 series (2M/4M/5M/8M)



- SMD 4.0, Quick Pick, AI SSA, AI Coding, Perimeter Protection
- 2.1mm (Wedge Dome only), 2.8mm, 3.6mm, 6mm/2.7-13.5mm
- Built-in mic
- Smart H.264+/H.265+ triple-stream encoding
- Starlight, WDR, 3D DNR, HLC, BLC
- Micro SD card, IP67, PoE



IPC TiOC 2.0 series (4M/5M/8M)



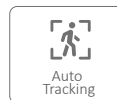
- SMD 4.0, Quick Pick, AI SSA, AI Coding, Perimeter Protection
- Built-in dual mic & speaker; Two-way Talk
- Smart H.264+/H.265+ triple-stream encoding
- Smart Dual Illuminators
- WDR, 3D DNR, HLC, BLC
- Micro SD card, IP67, PoE

SMD 4.0/AI SSA will be supported by new FW (2022.06)

WizSense PTZ



PTZ SD5A-GA/GB series (2M/4M)



- SMD 4.0, Perimeter Protection, Face Detection
- Auto tracking 3.0
- Quick Pick
- IR distance up to 150m, Starlight+
- Powerful 45x optical zoom
- Smart H.264+/H.265+, triple-stream encoding
- WDR, 3D DNR, HLC, BLC
- IP67, IK10, PoE+



SD49-GB series (2M/4M)

Coming
Soon

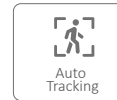


- SMD 4.0, Perimeter Protection, Face Detection
- Quick Pick
- IR distance up to 100m, Starlight
- Powerful 25x optical zoom
- Smart H.264+/H.265+, triple-stream encoding
- WDR, 3D DNR, HLC, BLC
- IP66, PoE+

This product will be released in August 2022.



SD6CE-GB series (2M/4M)



- SMD 4.0, Perimeter Protection, Face Detection
- Quick Pick
- Auto tracking 3.0
- IR distance up to 200m, Starlight+
- Powerful 32x optical zoom
- Smart H.264+/H.265+, triple-stream encoding
- WDR, 3D DNR, HLC, BLC
- IP67, IK10, PoE+

This product will be released in September 2022.

WizSense NVR



NVR2000-I2



- Up to 1 channel of Face Recognition video stream
- Up to 1 channel of Perimeter Protection
- Up to 4 channels of SMD Plus
- Max. 6 channels of 1080p@30 fps decoding capacity
- Max. 144/144/72Mbps incoming/storage/outgoing bandwidth

Quick Pick will be supported by new FW.



NVR4000-4KS2/I



- Up to 1 channel of Face Recognition video stream
- Up to 2 channels of Perimeter Protection
- Up to 4 channels of SMD Plus
- Max. 10 channels of 1080p@30 fps decoding capacity
- Max. 256/256/256Mbps incoming/storage/outgoing bandwidth

Quick Pick will be supported by new FW (2022.06).

Dahua AI Technology Awards



2018

Object Search Field:

- Market1501, DukeMTMC-reID and CUHK03 Person Re-identification No. 1
- PRCV2018 Large-scale Pedestrian Search Competition – No. 1 in two items

Scene Recognition Field:

- KITTI VISION (Scene Flow Evaluation) No. 1
- KITTI VISION (Optical Flow Evaluation) No. 1

Object Segmentation Field:

- KITTI VISION (Road/Lane Detection Evaluation) Driving Area Road Class No. 1

Object Detection Field:

- KITTI VISION (2D Object Detection Evaluation) Vehicle Class No. 1
- KITTI VISION (2D Object Detection Evaluation) Human Body Class No. 1
- KITTI VISION (3D Object Detection Evaluation) Vehicle Class No. 1

Object Tracking Field:

- MOT (Multiple Object Tracking) Pedestrian Class No. 1
- MOT (Multiple Object Tracking) Vehicle Class No. 1
- KITTI VISION (Object Tracking Evaluation) Vehicle Class No. 1

2019

Semantic Segmentation Field:

- KITTI VISION (Semantic Segmentation Evaluation) Image Semantic Segmentation Class No. 1

Object Search Field:

- Market1501, DukeMTMC-reID
- CUHK03 Pedestrian Repeated Identification No. 1

Object Segmentation Field:

- KITTI VISION (Semantic Instance Segmentation Evaluation) Object Segmentation No. 1

2020

Semantic Segmentation Filed:

- Cityscapes Dataset: Pixel-Level Semantic Labeling Task Urban Scene Data Set: Semantic Segmentation Task No. 1

Target Tracking Filed:

- GOT-10k (Generic Object Tracking) Universal Target Tracking No. 1

Semantic Segmentation Field:

- ADE20K (MIT Scene Parsing Benchmark) Semantic Segmentation No. 1

Binocular Stereo Matching Field:

- KITTI (Stereo Evaluation 2015) Binocular Stereo Matching No.1

Target Detection Field:

- OSCD (Onera Satellite Change Detection) Remote Sensing Image Change Detection Dataset of French Aerospace Research Institute No. 1
- DOTA (A Large-scale Dataset for Object Detection in Aerial Images) Large-scale Aerial Image Target Detection Dataset No. 1

Target Search Field:

- Market1501, DukeMTMC-reID, CUHK03 Repeated Pedestrian Identification No.1

Gait Recognition Field:

- CASIA-B Gait Dataset No. 1

2021

Semantic Segmentation Filed:

- Cityscapes Dataset: Instance-Level Semantic Labeling Task No. 1
- MSCOCO Dataset: COCO Detection Challenge (Segmentation Mask, Test-dev) No. 1
- Weakly Supervised Semantic Segmentation for Lung Adenocarcinoma No. 1

Target Tracking Filed:

- MSCOCO dataset: COCO Detection Challenge (Bounding Box) No. 1

Target Search Field:

- VERI-Wild Vehicle Image Search Dataset No. 1

OCR Field:

- ICDAR 2019 ReCTS: Chinese Signboard Recognition No. 1
- Challenge Single Character Recognition, Character Line Recognition No. 1

Gait Recognition Field:

- CASIA-B Gait Dataset No. 1

ENABLING A SAFER SOCIETY AND SMARTER LIVING

Dahua CEE & Nordic
Tel: +48 223957400
Email: dh.cen@dahuatech.com

Dahua Technology Poland SP.ZO.O
Tel: +48 223957400
Email: biuro.pl@dahuatech.com

Dahua Technology SRB D.O.O
Tel: +38 1 (11) 4429999
Email: dh.srb@dahuatech.com

Dahua Technology Denmark Aps
Email: Nordic.ne@dahuatech.com

Dahua Technology Hungary LTD
Tel: +36 17899852
Email: sales.hu@dahuatech.com

Dahua Technology Bulgaria EOOD
Tel: +35929950013
Support: support.bg@dahuatech.com

Dahua Technology SRL
Email: marketing.ro@dahuatech.com

Dahua Technology Czech.s.r.o.
Tel: +420 225 986 001
Email: admin.cz@dahuatech.com

Dahua Guvenlik Teknolojileri Sanayi ve Ticaret A.S.
Email: sales.tr@dahuatech.com

Dahua Technology Middle East FZE
Email: info.me@dahuatech.com

Dahua Technology Mexico S.A. DE C.V.
Tel: +52 55 67231936
Email: sales.mx@dahuatech.com
Support: support.mx@dahuatech.com

Dahua Technology Colombia S.A.S.
Tel: +57 6013106176
Email: marketing.co@dahuatech.com
Support: support.co@dahuatech.com

Dahua Technology Perú S.A.C
Tel: +511 500-8555
Email: sales.pe@dahuatech.com
Support: support.pe@dahuatech.com

Dahua Technology Chile SpA
Tel: +56 232705421
Email: sales.cl@dahuatech.com
Support: support.chile@dahuatech.com

Dahua Technology Argentina S.A.
Email: project.ar@dahuatech.com

Dahua Technology Panama S.A.
Email: sales.pa@dahuatech.com
Support: support.pa@dahuatech.com

Dahua Brazil
Tel: +55 11 32511871
Suporte Técnico: suporte.br@dahuatech.com
Vendas: comercial.br@dahuatech.com

Dahua Technology USA Inc.
Tel: +1 (949) 679-7777
Email: sales.usa@dahuatech.com
Support: support.usa@dahuatech.com

Dahua Technology Canada
Tel: +1 877-606-1590
Email: sales.usa@dahuatech.com
Support: support.usa@dahuatech.com

Dahua Europe BV
Tel: +31 (0) 85-0715700
Email: sales.benelux@dahuatech.com
Support: support.benelux@dahuatech.com

Dahua Iberia, S.L.
Tel: +34 917649862
Email: sales.iberia@dahuatech.com
Support: support.iberia@dahuatech.com

Dahua Technology Italy s.r.l.
Tel: +39 02 99912900
Email: info.italy@dahuatech.com
Support: support.italy@dahuatech.com

Dahua Technology GmbH
Tel: +49 211 2054 4120
Email: sales.de@dahuatech.com
Support: support.de@dahuatech.com

Dahua Technology France
Tel: +33 (0) 1 48 53 70 53
Email: sales.france@dahuatech.com
Support: support.france@dahuatech.com

Dahua Singapore
Tel: +65 65380952
Email: sales.sg@dahuatech.com

Dahua Malaysia
Tel: +60376620732
Email: sales.my@dahuatech.com

Dahua Indonesia
Tel: +6227893330
Email: sales.id@dahuatech.com
Support: support.id@dahuatech.com

Dahua Australia
Tel: +61 290306000
Email: sales.oc@dahuatech.com

Dahua New Zealand
Tel: +64 09 2823467
Technical Hotline: 0800 854 857
Email: Dahua_NZ@dahuatech.com

Dahua Philippines
Email: Dahua_Philippines@dahuatech.com

Dahua Russia (Dahua Technology Rus LLC.)
Tel: 8 (800) 707-67-66
Email: info.ru@dahuatech.com

Dahua Kazakhstan (Dahua Technology Kazakhstan LLP)
Tel: +7 727 3110838
Email: sales.kz@dahuatech.com

Dahua Uzbekistan (OOO "Dahua Vision")
Tel: +998 781488666

Dahua Technology Ukraine Office
Tel: +380674011526
Email: dahua.ukraine@dahuatech.com

Dahua Technology UK Limited
Tel: +44 (0) 1628 613 500
Email: sales.uk@dahuatech.com
Support: support.uk@dahuatech.com

Dahua Technology South Africa (Pty) Ltd | Head Office
Office Line: +27 10 593 3242
WhatsApp Business Help-Line: +27 84 072 9260
Toll-Free Help-Line: 080 099 0064
Email: sales.za@dahuatech.com
Support: support.za@dahuatech.com

Dahua Technology Nigeria Representative Ltd.
Email: Westafrica@dahuatech.com

Dahua Thailand
Tel: +66 2541 5188
Email: info.th@dahuatech.com

Dahua Republic of Korea
Tel: +82-2-6486-8889
Email: sales.kr@dahuatech.com

Dahua Vietnam
Tel: +84 24 3202 6616
Email: DH_VIET@dahuatech.com

Dahua Technology Japan
Tel: +81-3-6661-6818
Fax: +81-3-6661-6857
Email: Dahua_Japan@dahuatech.com

Dahua Technology India Private Limited
Tel: +91 124 4569100
Email: sales.india@dahuatech.com

*Design and specifications are subject to change without notice.

Ver. 1, May. 2022

DAHUA TECHNOLOGY

Add: No.1199 Bin'an Road, Binjiang District, Hangzhou, China. 310053
Email: overseas@dahuatech.com
Website: www.dahuasecurity.com



YouTube



LinkedIn



Partner App



Website